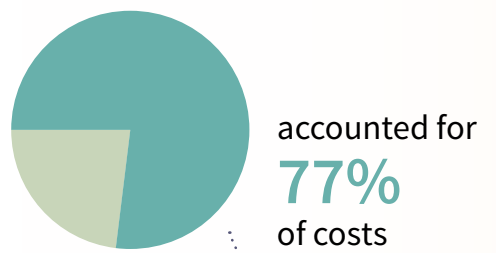




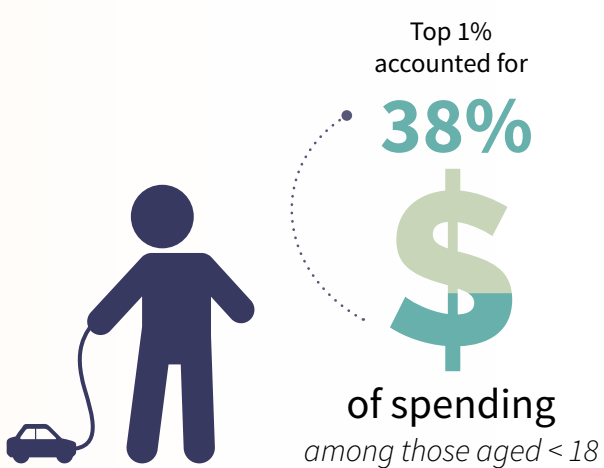
High-cost users of health care in Ontario



10% of health care users

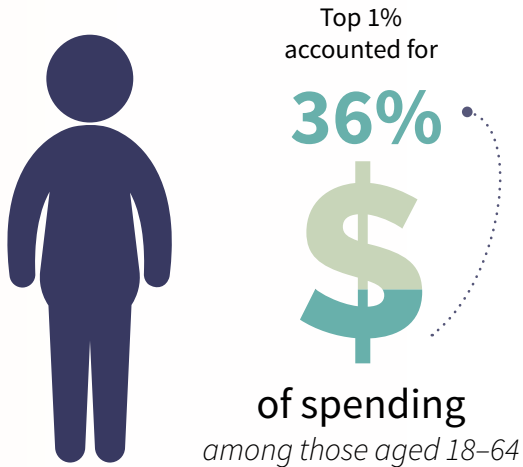


HIGH-COST USERS: *the top 1% by age group*



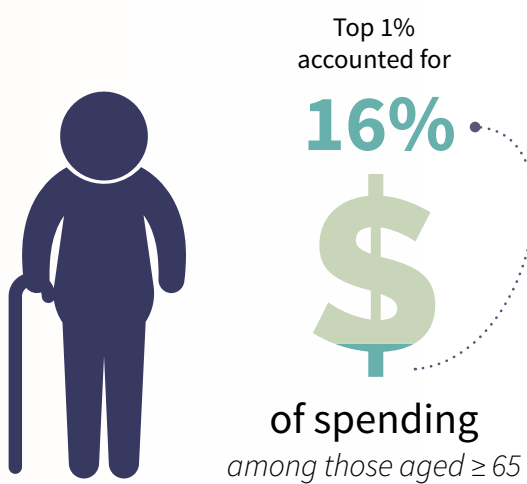
Top reasons for hospital admission among children

1. Low birth weight
2. Preterm infant
3. Depressive episode
4. Chemotherapy for neoplasm
5. Acute bronchiolitis



Top reasons for hospital admission among adults

1. Atherosclerosis
2. COPD
3. Palliative care
4. Congestive heart failure
5. Chemotherapy for neoplasm



Top reasons for hospital admission among older adults

1. Congestive heart failure
2. COPD
3. Urinary tract infection
4. Hip fracture
5. Pneumonia



1 in 3 people in the top 5% stayed in this category for 3 years

\$42 billion
total Ontario government health care spending in 2009



about 75% spent on individuals

most of the remainder spent on public health, community service agencies, admin staff